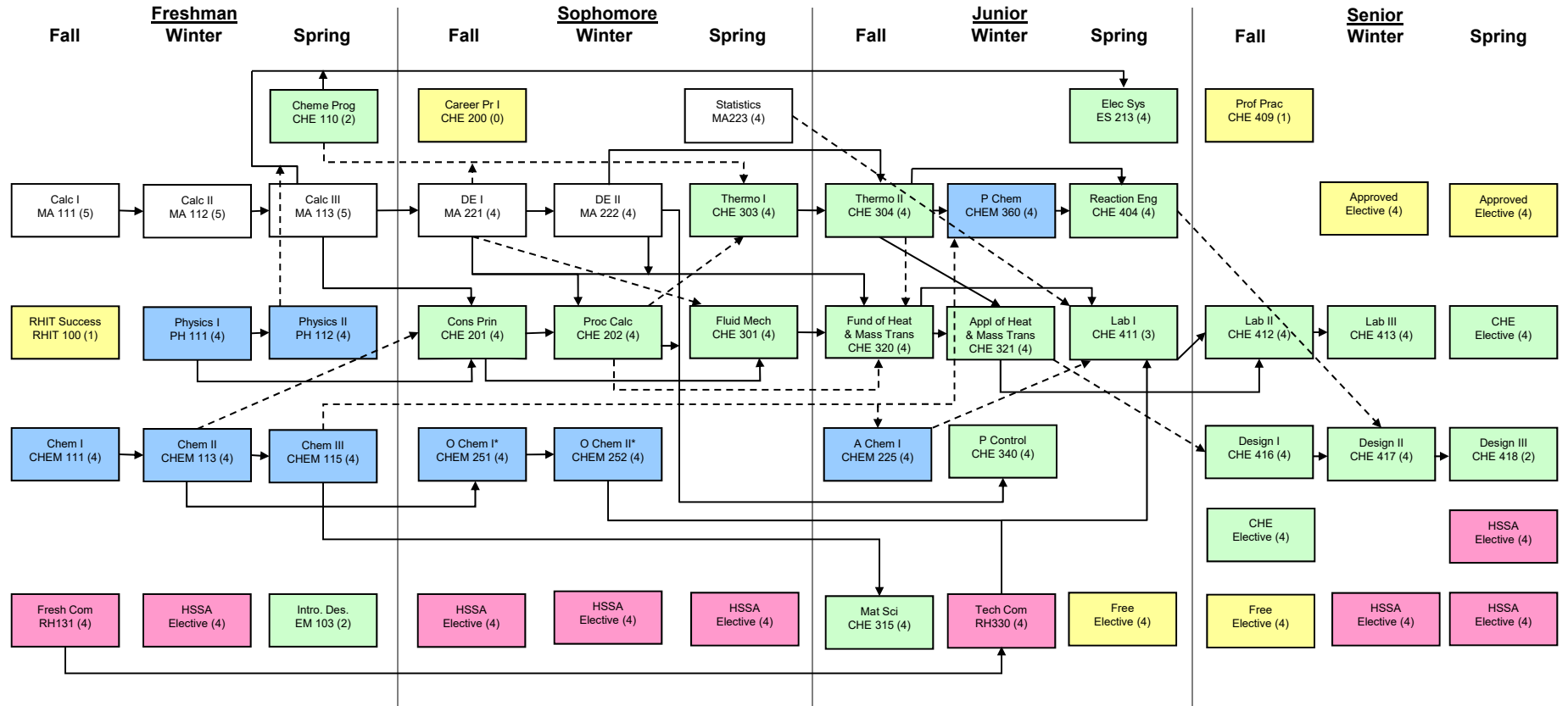


## Chemical Engineering Required Courses Flow Chart Plan A1



**LEGEND**

Math	General Ed
Science	Other
Engineering	

Arrows indicate prerequisite/corequisite requirements. There is no distinction between solid and dashed arrows, they are for ease of viewing only.

\*These courses may also be taken in the Winter and Spring terms of the Sophomore year.